

TEAC[®]

SERVICE MANUAL

CTM6854S

68 CM CTV

SPECIFICATION

SUPPLY VOLTAGE : AC220V 50Hz > + 10% / -20%

SYSTEM :	PAL - I / I	PAL - BG	PAL - I (UK)	PAL - SECAM - BG / DK	PAL - SECAM - BG / DK (HYPER)	PAL - BG (HYPER)	PAL - BG (CATV)	SECAM - L	L'	
CHANNEL L - VHF : H - VHF : UHF :	4 - 13 21 - 69	2 - 4 5 - 12 21 - 69	21 - 69	1 - 5 6 - 12 21 - 69	1 - 5 6 - 12 21 - 69	E2 - S10 E5 - S41 E21 - E69	E2 - S2 E5 - S20 E21 - E69	1 - Q 21 - 69	FB - FC	CH CH CH
VIF FREQUENCY :	38.9	38.9	39.5	38.0	38.9	38.9	38.9	38.9	32.7	MHz
SIF FREQUENCY :	32.9	33.4	33.5	31.5 32.5	32.4 33.4	33.4	33.4	32.4	39.2	MHz
CHROMA IF FREQUENCY :	34.47	34.47	35.07	33.57 33.57	34.47 34.47	34.47	34.47	34.47		MHz
INTER-CARRIER FREQUENCY :	6.0	5.5	6	6.5 5.5	5.5 6.5	5.5	5.5	6.5	6.5	MHz
SCANNING HORIZONTAL : VERTICAL :	15625 LINE 50 Hz									
ANTENNA INPUT IMPEDANCE :	75 OHM									
CRT :	25" 29"									

ITEMS OF MEASUREMENT	STANDARD	UNIT
VIDEO SENS. AT S/N 30db	< 57	dbuv
L - VHF	< 57	dbuv
H - VHF	< 57	dbuv
UHF	< 60	dbuv
SOUND SENS. AT S/N 30db	< 42	dbuv
L - VHF	< 42	dbuv
H - VHF	< 42	dbuv
UHF	< 48	dbuv
AGC CHARACTER	> 60	db
SELECTIVITY -1.5 MHz	> 35	db
+ 8 MHz	> 40	db
COLOR SENS.	< 45	dbuv
COLOR LOCK - IN RANGE	> +300	Hz
VERTICAL LOCK - IN RANGE	> 6	Hz
HORIZONTAL LOCK - IN RANGE	> 400	Hz
MAX BRIGHTNESS	> 100	cd/m ²
MAX OUTPUT POWER	> 4.5	W
OUTPUT POWER AT 10% THD	> 3.5	W
BUZZ	< -40	db
AFC RANGE	> +1	MHz
	> -0.5	MHz
MIN. VOL HUM	< 20	mV
RESOLUTION HORIZONTAL	> 300	LINES
VERTICAL	> 400	LINES
LINEARITY DISTORTION VERTICAL	< 10	%
HORIZONTAL	< 10	%
RASTER DISTORTION	< 5	%
REMOTE CONTROL DISTANCE	> 5	METER
ANGLE	> +15	DEGREE
POWER CONSUMPTION (AT NORMAL CONDITION)	< 120	WATTS
POWER CONSUMPTION (AT MAX. CONDITION)	< 150	WATTS
CONVERGENCE DISLOCATION AT AREA "A"	< 0.4	%
AREA "B"	< 0.8	%
(see fig.1)		

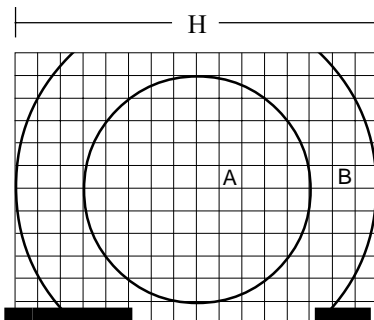


Fig.1

VIDEO INPUT LEVEL : 1.0V P-P + 3dB
 AUDIO INPUT LEVEL : 0.7V RMS + 3dB

ALIGNMENT INSTRUCTION

I. PLEASE READ BEFORE ATTEMPTING SERVICE

1. Never disconnect any leads while receiver is in operation.
2. Disconnect all power before attempting any repairs.
3. Do not short any portion of the circuit while power is on.
4. For safety reasons, all parts replaced should be identical, (for parts and part numbers see parts list).
5. Before alignment the set must be pre-heated for 30 minutes or more and erase magnetism thoroughly from CRT front chassis frame by erase coil. (Except IF, SYNC, COLOR, SECAM, B+, SOUND)

II. TEST EQUIPMENT

- | | |
|---|---|
| 1. Colour Bar, Dot, Cross Hatch Generator | 6. High Voltage Meter |
| 2. DC Power Supply | 7. Ampere Meter (0.5 Class, DC 3mA Max) |
| 3. Oscilloscope | 8. Demagnetizing Coil |
| 4. Vacuum Tube Voltmeter | 9. Philips Pattern Generator |
| 5. Volt Ohmmeter | 10. High Pot Tester |

III. FACTORY ADJUSTMENT : See table 1- 4

1. Press REMOTE FACTORY ON button.
2. Press REMOTE FACTORY button.
3. Press REMOTE UP or DOWN button select item.
4. Press REMOTE value (+) (-) button,adjust the value.
5. REMOTE DIALOG CENTRE button can turn off factory mode function.

REMARK : NO this factory on Normal remote control .

IV.B+ ADJUSTMENT

1. Connect a digital voltmeter between the W234 and Ground.
2. Press REMOTE Picture button.
3. Press REMOTE UP/DOWN and value (-) button set Brightness,contrast,color to minimum.
4. Adjust Screen Volume on FBT Until the picture can just been seen.
5. Adjust VR901 and obtain a reading of 143V +1V (DC).

V. AGC ALIGNMENT

1. Receive CH69 (UHF) and input field strength. (60dB in put signal)
2. Connect a digital voltmeter between the TUNER AGC TERMINAL and Ground.
3. Press REMOTE AGC button.
4. Press REMOTE value (+) (-) button adjust value to (0) and then adjust AGC take over value obtain drop down 0.4V. (DC)

REMARK : (1/ The drop down voltage should be more than and tends to 0.4V)

(2/ No observable noise can be seen)

VI. SOUND TRACKING ALIGNMENT

1. Receive a gray scale pattern.
2. Connect a oscilloscope and monitor IC109 TDA3857 PIN 15 and Ground.
3. Adjust T101 to obtain the waveform Fig.6.
4. Conect a Voltage meten and monitor IC 104 TDA9801 PIN 15 and gorund.
5. Adjust T101 obtain 5V+0.1V (DC).

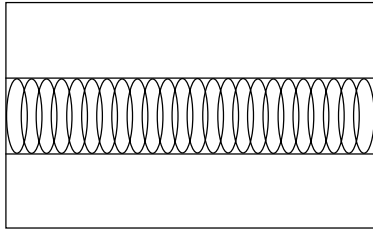


Fig.6

Remark: All frequency of Marker points are +0.2% tolerance.

VII. EAST - WEST CORR ECTION ADJUSTMENT

- 1) Receive a crosshatch and center cross pattern.
- 2) Set the Brightness,contrast to middle position.
- 3) Press REMOTE EW-Par/wid,EW-trap button,Press REMOTE VALUE (+) (-) button adjust Value to normal regular picture.
- 4) Press REMOTE WE-width button,Press REMOTE value (+) (-) button adjust value to proper horizontal width (90% + 2%)

VIII. HORIZONTAL SHIFT ADJUSTMENT

1. Receive Monoscope Pattern input signal 70dB +10dB.
2. Press REMOTE H-shirt button.
3. Press REMOTE value (+) (-) button adjust value to obtain the picture at center +2mm.
(Specification show in Fig.8)

IX. VERTICAL LINEARTY ADJUSTMENT

- 1) Receive a crosshatch and center cross pattern.
- 2) Set the Brightness,contrast to middle position.
- 3) Press REMOTE V-Slope,S-Correction button,Press REMOTE Value (+) (-) button adjust value to normal regular picture.
- 4) Press REMOTE V-Shift button,Press REMOTE Value (+) (-) button adjust value to obtain the picture at center.

X. VERTICAL AMPL ADJUSTMENT

1. Receive the Monoscope Pattern.
2. Press REMOTE V-ampl button.
3. Press REMOTE value (+) (-) button adjust value to obtain a normal picture.

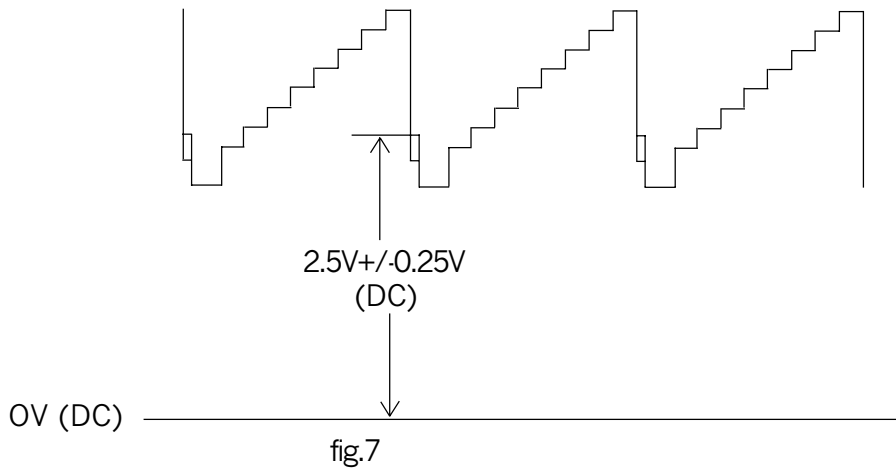
XI. WHITE BALANCE ALIGNMENT STEP

(Degauss the picture by degaussing coil if necessary)

1. Receive a grey scale pattern
2. Connect a oscilloscope and monitor CN101 pin"3"and ground.
3. Press REMOTE picture button.
4. Press REMOTE UP/DOWN and value (-) button set the brightness,contrast, to middle position.
5. Ajust screen volume on FBT untl the waveform to 2.5V+/-0.25V DC see fig.7.
6. Press REMOTE sub bri button.
7. Press REMOTE value (+) (-) button adjust value to (18).
8. Receive a black and white pattern
9. Press REMOTE with bal button.
10. Press REMOTE UP/Down and value (+) (-) button adjust blue str value to(0).
11. Press REMOTE picture button.
12. Press REMOTE UP/Down and Value(+)(-) button set the brightness and color to minimun position.

con
13. Pre

14. Pre () (-) button adjust the white balance.(9300° k)



XII.SUB - BRIGHTNESS ALIGNMENT

1. Receive a grey scale pattern.
2. Press REMOTE picture button,.
3. Press REMOTE UP/DOWN and value (-) button set the brightness, contrast to minimum.
4. Press REMOTE sub bright button.
5. Press REMOTE value (+) (-) button adjust value to brightness bar can just be seen.

XIII. FOCUS ALIGNMENT

- 1) Set the Brightness and Contrast to middle position.
- 2) Receive a monoscope pattern.
- 3) Adjust focus control to obtain sharpest picture.

XIV. HIGH POT TESTING

- 1) Short the L - pole and N - pole of AC line cord.
- 2) Switch on the power switch of the TV Set.
- 3) Connect The High Pot Tester (-) to L and N pole, (+) to the METAL PART of CABINET.

CONDITION SAFETY STD.	TEST STANDARD	TEST STANDARD FOR PRODUCTION
VDE, SAA	3.0KV 10mA / 1MIN	>3.5 KV <10mA / >10 SEC.
BS	4.0KV 10mA / 1MIN	>4.0 KV <10mA / >10 SEC.
CHINA STANDARD	3.0KV 10mA / 1MIN	>3.3 KV < 5mA / > 6 SEC.
UL	1.0KV 5mA / 1MIN	>1.25KV < 5mA / > 1 SEC.

Remark:

- 1) If no other specify, the strength of input signal should be 70dB +10dB.
- 2) The High Pot Tester can have < +5% tolerance.

DISTRICT	CENTRE (mm) POSITION	LIMIT (mm)	SCANNING SIZE (%)	SCANNING SIZE LIMIT (%)
THAILAND	-1	0 ~ -2	90	88 ~ 92
FRANCE	+3	0 ~ +5	90	88 ~ 94
GERMANY	+3	0 ~ +5	90	90 ~ 95
*GROUP A	-2	-5 ~ -1	90	88 ~ 94
*GROUP B	0	-2 ~ +2	90	88 ~ 94
*GROUP C	+3	0 ~ +5	90	88 ~ 94

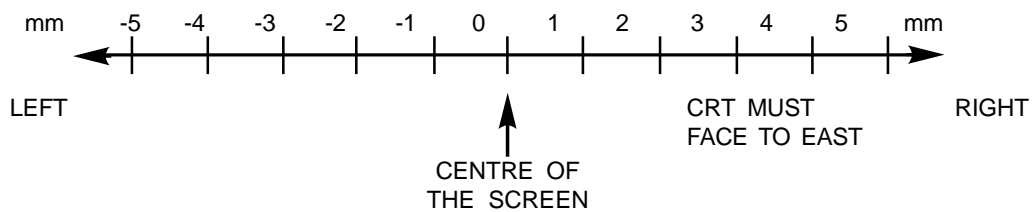


FIG. 8

- REMARK:
1. SUITABLE FOR 14" OR ABOVE TV.
 2. Adjust the centre position must take the upper side of monoscope pattern for standard.
 3. Group A : AUSTRALIA, NEW ZEALAND, TAHITI.
 4. Group B : HONG KONG, CHINA, AMERICA, CANADA, MALAYSIA, MEXICO.
 5. Group C : ENGLAND, ITALY, GERMANY, RUSSIA, SWITZERLAND, JUGOSLAVIA, SPANISH.
- If the above countries are not include, please consult to Engineering Dept.

FACTORY MODE TABLE 2

ITEM		VALUE ADJUST RANGE	REF VALUE	REMARK
1	H-SHIFT	co-ff	dd	For CTI ON TV set Adjustment
		80-Bf	a3	For CTI OFF TV set Adjustment
2	V-SLOPE	0-3f	2b	For TV set Adjustment
3	V-AMPL	40-80	55	For TV set Adjustment
4	S-CORRECT10N	80-Bf	90	For TV set Adjustment
5	V-SHIFT	0-3f	1e	For TV set Adjustment
6	EW-WIDTH	0-3f	36	For TV set Adjustment
7	EW-PAR	0-3f	16	For TV set Adjustment
8	EW-CORNER	0-3f	0	For TV set Adjustment
9	EW-TRAP	0-3f	2a	For TV set Adjustment
10	CONTROL 0		3	NON-Adjustable Value
11	CONTROL 1		90	NON-Adjustable Value
12	AGC	0-3f (TEAC) 40-7f (CHINA)	12	For TV set Adjustment
13	PLL		40	For TV Set IF Frequency 40 = 38.90 MHz 80 = 33.40 MHz 60 = 38.00 MHz Cl = 33.90 MHz

FACTORY MODE TABLE 3

	ITEM	VALUE ADJUST RANGE	REF VALUE	REMARK
1	DVD1	0-FF	38	NON-Adjustable value
	CONTROL 2		18	
2	DVD2	0-FF	bb	NON-Adjustable value
	CONTROL 3		25"set 12 29"set 14	
3	DVD3	0-FF	a3	CTI ON Set 9 CTI OFF Set e9
	CONTROL 4		e9	
4	HOTEL LOCK		0	0 = OFF 1 = ON
5	SaB SHP	00-31	00	Sab shp seting
6	COMB		1	1 = COMB ON 0 = COMB OFF
7	NICAM		1	0 = NICAM/G.ST 2 = G.ST 1 = NICAM
8	CCD		0	0 = OFF CCD 1 = ON CCD

LOCATION \ T R	B.V	C.V	E.V					
Q101	0.7	0	1.6					
Q102	4.9	0.3	4.9					
Q103	4.9	0.15	4.9					
Q104	4.3	4.9	4.9					
Q105	3.2	0	3.2					
Q106	2.4	7.9	1.7					
Q108	2.8	6.7	2.1					
Q109	1	7	0.3					
Q110	0.7	0	1.4					
Q111	7.7	0	7.9					
Q113	4.3	4.8	4.9					
Q114	4.9	4.9	4.6					
Q115	0	4.9	0					
Q116	4.8	0	4.9					
Q117	0.7	0.5	0					
Q118	0	8.1	0					
Q119	0.6	0	0					
Q301	2.8	2.8	2.8					
Q401	13.6	0	14.3					
Q402	0.6	13.8	0					
Q403	0	115	0					
Q404	0.4	76	0					
Q405	21.6	21	21					
Q701	0	10	0					
Q909	-2.35	293	0					
Q910	0	8.6	0					
Q911	10.2	0	1.3					
Q912	8.9	14	8.2					
Q913	15.3	15.3	14.6					
Q914	14.7	15.3	15.3					

PIN NO	SYMBOL	IC101/V	IC102/V	IC103/V	IC104/V	IC105/V	IC106/V	IC107/V
1		NC	0.7	GND	0	5	GND	NC
2		NC	0.7	NC	0	5	GND	NC
3		NC	0	GND	0	5	GND	GND
4		NC	0	GND	0	5	GND	4.2
5		2.6	4.7	4.8	0	5	5	4.2
6		2.1	0	4.8	0	5	5	GND
7		4.3	0.3	4.8	0	5	5	3.9
8		4.3	NC	4.5	0	5	5	2.6
9		6.6	NC		0	GND		0
10		1.1	4.5		0	GND		2.3
11		3.7	NC		0	GND		2.3
12		7.8	NC		0	GND		2.3
13		3.5	NC		0	GND		GND
14		GND	4.7		0	5		GND
15		NC	NC		0	5		4.9
16		3.9	4.1		0	5		4.9
17		3.3	0		0	GND		GND
18		6.5	GND		0	GND		1.9
19		3.1	2.2		0	GND		1.9
20		2.7	1.8		5	5		NC
21		2.5	GND			GND		NC
22		3.6	4.8			GND		NC
23		3.5	3.5			2.4		NC
24		3.5	3.5			GND		NC
25		3.5	4.6			2.1		NC
26		0.2	NC			2.5		NC
27		2.1	NC			0		NC
28		2.1	NC			GND		GND
29		2.4	4.7			NC		2.3
30		2.4	4.7			5		GND
31		2.4	4.3			2.5		2.3
32		2.4	4.3			0		2.3
33		4.2	4.7			0		NC
34		2.5	4.3			0		NC
35		2.5	NC			0		GND
36		4.3	NC			0.8		NC
37		7.9	4.7			0.8		NC
38		1.9	0			5		4.4
39		4.9	0			5		4.4
40		0.3	0			GND		GND
41		0.7	0			2.4		GND
42		4	0			2.7		GND
43		3.8				0		GND
44		GND				5		GND
45		0.5				GND		GND
46		2.4				GND		2.2
47		2.6				GND		2.3
48		4.6				GND		2.3
49		4.6				4.3		GND
50		2.2				4.3		GND
51		3.8				5		NC
52		3.8				5		NC
53		3.4						2.4
54		4.6						2.4
55		2.9						2.4
56		3.7						0
57								NC
58								NC
59								4.8
60								2.3
61								2.3
62								2.4
63								2.4
64								4.9

PIN NO	SYMBOL	IC108/V	IC109/V	IC301/V	IC401/V	IC402/V	IC403/V	IC404/V
1		10.5	1.8	0	0.7	14.6	13.7	11.8
2		15.4	2.1	0	8.3	GND	GND	GND
3		10.5	2.5	0	11.5	8	5	5
4		10.4	1.8	4.8	15.6			
5		GND	1.8	0.7	8.1			
6		10.4	1.9	GND	GND			
7		21	1.9	2	44			
8		10.5	1.8	1.6	GND			
9		10.5	1.8	1	8.4			
10			3.9	1.2	15.6			
11			3.9	GND	1.2			
12			3	4.8	1.2			
13			NC	1	7			
14			2.8	4.2				
15			1.8	4.2				
16			2.8	1				
17			NC	0				
18			GND	0				
19			4.9					
20			1.8					
21								
22								
23								
24								
25								
26								
27								
28								
29								
30								
31								
32								
33								
34								
35								
36								
37								
38								
39								
40								
41								
42								
43								
44								
45								
46								
47								
48								
49								
50								
51								
52								
53								
54								
55								
56								
57								
58								
59								
60								
61								
62								
63								
64								

PIN NO	SYMBOL	IC501/V	IC01/V	IC701/V										
1		3.2	7.5	2.9										
2		3.3	3.8	0										
3		3.1	NC	2.9										
4		GND	NC	2.9										
5		6.4	NC	2.9										
6		196	5.7	2.9										
7		91	5.7	2.9										
8		82	5.7	2.9										
9		88	5.7	2.9										
10			5.7	2.9										
11			5.7	0										
12			GND	0										
13			5.7	0										
14			5.7	0										
15			5.7	3										
16			5.7	2.9										
17			10	1.										
18			10	47										
19			GND	0										
20			4.2	0										
21			4.2	0										
22			10											
23			10											
24			5.7											
25			5.7											
26			NC											
27			5.7											
28			NC											
29			10											
30			4.3											
31			4.5											
32			4.3											
33			4.5											
34			NC											
35			NC											
36			NC											
37														
38														
39														
40														
41														
42														
43														
44														
45														
46														
47														
48														
49														
50														
51														
52														
53														
54														
55														
56														
57														
58														
59														
60														
61														
62														
63														
64														

PART NO	DESCRIPTION	-----	QTY	LOCATION-----CTM6854S
155R833030220	REMOTE CONTROL ASSY			
107-800455-4G	RESONATOR 455 KHZ ET455Z	PO TUNG	1	CF701
113-109005-17	CARBON FILM RESISTOR 1 OHM	1/16W +-5%	2	R701,703
113-221005-17	CARBON FILM RESISTOR 220 OHM	1/16W +-5%	1	R702
123-151354-93	CERAMIC CAP. 150PF 50V +-5%	(NPO) "DONGGUAN WANG MING"	2	C701,702
127-105072-0Y	ELECT CAP. 1 MFD 50V +-20%	{TAPING} "HUNAN YICK YANG"	1	C703
130-134148-01	SILICON DIODE IN4148	"AUTO INSERTIO10-1N4148-ABX	3	D702-704
130-600101-00	INFRARED EMITTER EL-1L1	KODENSHI	1	LED701
131-231815-0A	TRANSISTOR 2SC1815 TOSHIBA	{TAPING} 11-SC1815-YBX	1	Q701
133-803428-12	I.C. M34280M1 MITSUBISHI		1	IC701
172-726000-99	BARE WIRE 54MM	41-WJ0060-B00	0.1	W701
190-R83301-02	REMOTE P.C.B. (270499 REV.1)		1	
514-200407-10	SELF-TAPPING SCREW 2 X 7 B/T	(HARDEN)	1	FOR HANDSET
774-002001-00	BATTERY SPRING +VE & -VE		1	
774-R83301-00	BATTERY SPRING (-VE)		1	
774-R83302-00	BATTERY SPRING (+VE)		1	
810-041104-13	POLYBAG 4" X 11" X 0.04MM	W/RE-CYCLING MARK	1	FOR HANDSET
849-R83301-08	RUBBER KEY PAD - ENG STD	{FOR MTSUBISHI lȳC}	1	
900-R83301-75	REMOTE TOP CAB. - SILVER 1008K	SPRAYED "MITSUBISHI lȳC"	1	
902-R83301-10	HANDSET REAR CAB - 1008K	SILVER SPRAYED	1	
910-R83301-12	BATTERY DOOR - 1008K SILVER	SPRAYED	1	
919-R83310-60	R/T DOOR - TEAC (A) DESIGN	(CT-M6854S) (RC-900)	1	
509-305010-00	MACHINE SCREW 3 X 10 KM	(BLACK)	2	FOR JACK PLATE TO REAR CAB
514-400416-10	SELF-TAPPING SCREW 4 X 16 B/T	(HARDEN)	8	8 FOR FIXING MAIN SPEAKER
514-400425-10	SELF-TAPPING SCREW 4 X 25 B/T	(HARDEN)	10	FOR FRONT CAB. TO REAR CAB
514-400430-10	SELF-TAPPING SCREW 4 X 30 B/T	(HARDEN)	3	FOR FRONT CAB. TO REAR CAB.
515-300110-10	SELF-TAPPING SCREW 3 X 10	W/B/T	2	2 FOR REMOTE CONTROL.PCB
515-303406-10	SELF-TAPPING SCREW 3 X 6	W/B/T (HARDEN)	5	FOR CHANNEL PCB TO FRONT CAB.
515-303408-10	SELF-TAPPING SCREW 3 X 8	W/B/T (HARDEN)	1	FOR WASHER TO AC LINE CORD CLIP MTG
524-382904-00	CRT MTG.SCREW 6X35 VP (HARDE		4	FOR CRT MTG.
580-101261-02	CABLE TIE L=100MM "HONG LI"		9	7 FOR DEGAUSSING COIL, 2 FOR SPK. WIRE
580-102261-00	CABLE TIE L=200MM W=2.5MM		4	FOR DEGAUSSING COIL
580-103261-00	CABLE TIE L=300MM W=3.5MM		6	FOR DEGAUSSING COIL
622-825F01-00	FELT L240 X W17 X T0.3MM	W/TAPE	5	BETWEEN CRT AND FRONT CAB.
622-882802-00	FELT L240 X W17 X T0.5MM	W/TAPE	8	FOR CRT
630-173016-00	FIBRE WASHER ID=17 OD=30 T=1.6		1	FOR AC LINE CORD TO AC LINE CORD CLIP MTG
630-238010-00	FIBRE WASHER OD=23 , ID=8	T=1MM	4	FOR CRT MTG.
744-881301-00	SPRING FOR C.R.T. MOUNTING 5.2	X 42 X 0.6MM	2	FOR CRT
750-063102-00	SOLDERING LUG. SP-7 TIMEMAKER	OD:7 ID:3.2 LEG:4X35MM	2	FOR SPK. WIRE

PART NO	DESCRIPTION	-----	QTY	LOCATION-----CTM6854S
777-733A01-00	SPRING ID=10.0MM L=22.0MM		1	FOR POWER KNOB
826-432005-00	FOAM SHEET - 43" X 20" X 0.5MM	THK	1	FOR UNIT TOP
834-210803-00	RUBBER WASHER OD=21 ID=8 T=3.		8	FOR CRT MTG.
840-051030-11	RUBBER PAD (ONE SIDE W/TAPE)		4	FOR CRT
948-882005-00	DOOR LOCKER UPC-165 UNITRONI		1	
954-882100-00	AC LINE CORD CLIP		1	
969-282902-00	LIGH GUIDING POST(TRANSPAREN		1	
003-131315-0E	TUNER 38.9 MHZ(WSP HYPER 5V)	UV1315 PHILIPS (LOW JACK 30MM)	1	TUNER
105-109103-08	FIXED INDUCTIVE COIL 1.0UH	+ -10% (WITTIS) *NOT USE*	2	(L601,602 FOR SIDE AV JACK BOARD)
107-731500-0I	SAW FILTER 33.4 MHZ B5308	"NANYANG"	1	SAW102
107-738915-10	SAW FILTER 38.9 MHZ TSF5315U	SANYO	1	SAW101
113-101005-17	CARBON FILM RESISTOR 100 OHM	1/16W +-5%	3	R330,331,332
113-103005-17	CARBON FILM RESISTOR 10K OHM	1/16W +-5% 18-CB0103-JNX	1	R336
113-122005-17	CARBON FILM RESISTOR 1.2K OHM	1/16W +-5%	1	R334
113-220305-75	METAL OXIDE FILM RESISTOR 22	OHM 1W +-5%	1	R337
113-221005-17	CARBON FILM RESISTOR 220 OHM	1/16W +-5%	1	R335
113-391005-17	CARBON FILM RESISTOR 390 OHM	1/16W +-5%	2	(R602,603 FOR SIDE AV JACK BOARD)
113-393005-17	CARBON FILM RESISTOR 39K OHM	1/16W +-5%	1	R333
123-10135E-60	CERAMIC CAP. 100PF 50V +-10%	"SHENZHEN HUATAI"	2	C333,334
123-103374-90	CERAMIC CAP. 0.01 MFD 50V +80	-20% "DONGGUAN26-EBP103-ZFX	2	(C601,602 FOR SIDE AV JACK BOARD)
123-10427E-90	CERAMIC CAP. 0.1 MFD 25V +80	-20% "SHENZHEN HUATAI"	2	C337,338
123-271354-60	CERAMIC CAP. 270PF 50V +-5%	(SL TYPE) "GONGGUAN WANG MIN	2	C330,331
123-33135E-60	CERAMIC CAP. 330PF 50V +-10%	"SHENZHEN HUATAI"	1	C332
126-104071-01	MYLAR CAP. 0.1 MFD 50V +-10%		1	C340
126-224071-01	MYLAR CAP 0.22 MFD 50V +-10%	*NOT USE* 2002-12-28	1	C339
127-226042-0Y	ELECT CAP. 22 MFD 16V +-20%	{TAPING} "HUNAN YICK YANG"	1	C341
130-410120-U1	ZENER DIODE 12V 1/2W +-5%	{TAPING} "RUGAO DACHANG"	1	ZD330
133-104565-33	I.C. TDA4565 PHILIPS		1	IC330
133-108843-33	I.C. TDA8843 PHILIPS		1	IC101
160-102255-27	PIN CONNECTOR 2 PINS PLUG	STRAIGHT (UL) (S.H.S)	4	CN331,332,(CN601,602 SIDE AV JACK BOARD)
160-104255-27	PIN CONNECTOR 4 PINS PLUG	(SHS)	1	CN330
161-121402-01	MINI JACK 3 PIN CK3-3.5-11X	"SHENZHEN CONIC"	1	(EP601 FOR SIDE AV JACK BOARD)
166-281922-4W	SPEAKER 2-1/4" X 5" 8 OTH 10W	YDP613-88 (TCL:42-61308G-XX1)	2	
172-726000-99	BARE WIRE 54MM	41-WJ0060-B00	0.4	W279,290,291,292,330,C335,C336
172-726000-99	BARE WIRE 54MM	41-WJ0060-B00	0	(R601 FOR SDIE AV JACK BOARD)
186-223500-15	HI-WATT REGULAR STANDARD 2A	R6P VINYL JACKET 1.5V*NOT USE*	2	
190-932900-20	CTI P.C.B. (020200)		1	
191-200056-10	2 PIN SOCKET ASS'Y L=560MM		1	FROM MAIN CN107 TO SIDE AV JACK BOA PIN
191-200056-10	2 PIN SOCKET ASS'Y L=560MM		0	`1'TO`J', `2'TO`H'

PART NO	DESCRIPTION	-----	QTY	LOCATION-----CTM6854S
191-201013-10	2 PIN SOCKET ASS'Y L=240MM		1	FROM SIDE AV JACK CN601 TO RIGHT SPK. PIN
191-201013-10	2 PIN SOCKET ASS'Y L=240MM		0	'1' TO '+', '2' TO '-'
191-201068-10	2 PIN SOCKET ASS'Y NL=900MM	AWG26 UL1007	1	FROM SIDE AV JACK B CN602 TO LEFT SPK. PIN
191-201068-10	2 PIN SOCKET ASS'Y NL=900MM	AWG26 UL1007	0	'1' TO '+', '2' TO '-'
191-201231-10	2 PIN FLAT CABLE L=140MM AWG26	(1 SIDE SOCKET, 1 SIDE PLUG)	1	MAIN PCB CN333 TO CTI PCB CN331 PIN '1'TO'1',
191-201231-10	2 PIN FLAT CABLE L=140MM AWG26	(1 SIDE SOCKET, 1 SIDE PLUG)	0	'2' TO '2'
191-201238-10	2 PIN FLAT CABLE L=240MM #26	(1 SIDE SOCKET, 1 SIDE PLUG)	1	MAIN PCB CN335 TO CTI PCB CN332 PIN '1'TO'1',
191-201238-10	2 PIN FLAT CABLE L=240MM #26	(1 SIDE SOCKET, 1 SIDE PLUG)	0	'2' TO '2'
191-301005-10	3 PIN SOCKET ASS'Y (2 WIRE)	L=560MM	1	MAIN BOARD CN106 TO SIDE AV JACK BOA PIN
191-301005-10	3 PIN SOCKET ASS'Y (2 WIRE)	L=560MM	0	'1'TO'F', '2'TO'G'
191-401005-10	4 PIN SOCKET ASS'Y L=450MM		1	FOR CRT
191-401240-10	4 PIN FLAT CABLE 120MM #28 UL	20080 1 SIDE SOCK,1 SIDE PLUG	1	MAIN PCB CN334 TO CTI PCB CN330 PIN '1'TO'1',
191-401240-10	4 PIN FLAT CABLE 120MM #28 UL	20080 1 SIDE SOCK,1 SIDE PLUG	0	'2'TO'2', '3'TO'3', '4'TO'4'
515-303408-10	SELF-TAPPING SCREW 3 X 8	W/B/T (HARDEN)	2	FOR CTI PCB
610-332941-13	GIFT BOX - TEAC (A) DESIGN	(CT-M6854S)	1	
663-TW0017-02	SERIAL NO.LABEL - TEAC DESIGN	FOR TW02001701	4	
669-2029C1-23	RATING LABEL - TEAC (A) DESIGN	(CT-M6854S)	1	
670-202900-31	I/MAMUAL - TEAC (C) DESIGN	(CT-M6854S)	1	
678-202104-01	GUARANTEE STICKER - TEAC	DESIGN (3 YEARS)	1	
678-202109-01	WARNING LABEL - TEAC DESIGN		2	
678-202901-08	SCREEN STICKER-TEAC (B) DESIGN	(CT-M6854S)	1	
678-202904-01	V.NO.LABEL - TEAC DESIGN		2	
678-293303-01	TOTAL CARE LABEL-REFER TCL ARTWORK	(TEAC) TCL:71-276630-0A0A	1	
678-931321-01	ADDENDUM - TEAC DESIGN	(INSERT IN I/M)	1	
690-213B39-01	W.CARD - REFER TCL ARTWORK	{TEAC} (P/N:70-323110-00A1B)	1	
693-202901-08	EAN CODE LABEL - 932507005594		2	
710-932901-01	NAME PLATE - TEAC (B) DESIGN	(BIG SIZE) (ELECTROFORMED)	1	
749-282902-00	HEAD PHONE FIXED PLATE (NICKEL)	PLATE BLACK)	1	FOR SIDE JACK PCB MTG.
800-202941-00	POLYFOAM BOTTOM (C) - LEFT	W/O WOOFER	1	
800-202942-00	POLYFOAM BOTTOM (C) - RIGHT	W/O WOOFER	1	
800-202943-00	POLYFOAM TOP (C) - LEFT	W/O WOOFER	1	
800-202944-00	POLYFOAM TOP (C) - RIGHT	W/O WOOFER	1	
810-091504-13	POLYBAG 9" X 15" X 0.04MM W/	RE-CYCLING P.E.MARK	1	FOR I/MANUAL
810-505504-1B	POLYBAG 50"X55"X0.04MM PE MAT	TEAC DESIGN {CT-F6850S}	1	FOR UNIT
884-2029C3-01	P/PLATE- BLK ENG STD W/SILVER	8001 SS. (7 HOLE)	1	
884-382524-06	SIDE JACK COVER - ENG STD	SILVER 1008K (AV 2IN)(4 KEYS)	1	
884-729A43-02	JACK COVER - TEAC DESIGN	{CT-F683}	1	
900-202921-U2	FRONT CABINET (C)-SILVER 1008K	SPY W.GGREY 433C S.S (94V0)	1	
902-202932-U3	REAR CAB. - 1008K SILVER SPY	(94V0)	1	

PART NO	DESCRIPTION	-----	QTY	LOCATION-----CTM6854S
919-2029C1-32	PRESET DOOR - TEAC (A) DESIGN (CT-M6854S)		1	
980-382502-07	SIDE JACK PLATE - 1008K SILVER SPRAY		1	
980-729A12-U0	JACK PLATE W/BRASS INSERL UL 940V		1	
991-282901-U0	POWER KNOB - SILVER 1008K SPY (94V0)		1	
008-900291-04	DEGAUSSING COIL 90T (W/FIVE LAYERS OF TAPE) FOR 29"		1	# L903
171-550084-K0	7' AC LINE CORD KE-12 SAA PLUG 2 PIN L-DUTY "KENIC"		1	#
171-550084-K0	7' AC LINE CORD KE-12 SAA PLUG 2 PIN L-DUTY "KENIC"		0	#
1802029T037CP	MAIN PCB ASSY			
101-160984-94	STANDBY SWITCHING TRANSFORMER KB16E984 "HIGHLIGHT"		1	T970
101-191005-96	HORIZONTAL DRIVE TRANSFORMER R1005		1	T401
105-100103-16	FIXED INDUCTIVE COIL 10UH 10% AL0305-100K "BOLUO DUIWANG"		6	L101-103,105,109,110
105-100201-31	LINEARITY COIL 10UH +-20% "YIXING CHUANGXING"		2	FOR L404,L405
105-109103-16	FIXED INDUCTIVE COIL 1UH 10% AL0305-1R0K "BOLUO DUIWANG"		5	R252,253,W151,152,L201
105-201106-20	CHOKE COIL DQG-G200UH-59 "YIFENG"		3	L403,904,W255
106-210048-01	RELAY 48V VS48MB "TAKAMISAWA"		1	RLY902
107-105500-66	SOUND TRAP CERAMIC FILTER 5.5MHZ WEI HAW		1	CF101
113-100105-17	CARBON FILM RESISTOR 10 OHM 1/4W +-5%		2	R238,242
113-100505-75	METAL OXIDE FILM RESISTOR 10 OHM 3W +-5%		2	R422,411
113-101005-17	CARBON FILM RESISTOR 100 OHM 1/16W +-5%		7	R123,141,173,174,180,194,196
113-101005-17	CARBON FILM RESISTOR 100 OHM 1/16W +-5%		6	R201,202,207,239,240,247
113-101005-17	CARBON FILM RESISTOR 100 OHM 1/16W +-5%		4	R501-503,160
113-101005-17	CARBON FILM RESISTOR 100 OHM 1/16W +-5%		20	R06-23,38,39
113-101105-17	CARBON FILM RESISTOR 100 OHM 1/4W +-5%		3	R938,973,975
113-101305-75	METAL OXIDE FILM RESISTOR 100 OHM 1W +-5%		1	R939
113-102005-17	CARBON FILM RESISTOR 1K OHM 1/16W +-5%		13	R101,140,148,152,161,166,197,198,208-211,114
113-102005-17	CARBON FILM RESISTOR 1K OHM 1/16W +-5%		7	R245,249,250,267,268,402,510
113-102005-17	CARBON FILM RESISTOR 1K OHM 1/16W +-5%		3	R40,41,278
113-102203-9B	CARBON COMPOSITION RES. 1K OHM 1/2W +-10% "SHENZHEN SHUILI"		3	R505-507
113-102305-75	METAL OXIDE FILM RESISTOR 1K OHM 1W +-5%		1	R410
113-103005-17	CARBON FILM RESISTOR 10K OHM 1/16W +-5% 18-CB0103-JNX		4	R121,187,189,251
113-103005-17	CARBON FILM RESISTOR 10K OHM 1/16W +-5% 18-CB0103-JNX		2	R185,05
113-103105-17	CARBON FILM RESISTOR 10K OHM 1/4W +-5%		2	R905,514
113-1031J1-67	METAL FILM RESISTOR 10K OHM 1/4W +-1% "DONGGUAN CHANGAN"		1	R113
113-104005-17	CARBON FILM RESISTOR 100K OHM 1/16W +-5%		1	R142
113-104305-75	METAL OXIDE FILM RESISTOR 100K OHM 1W +-5%		1	R918
113-109105-17	CARBON FILM RESISTOR 1 OHM 1/4W +-5%		2	R235,406
113-109205-12	CARBON FILM RESISTOR 1 OHM 1/2W +-5%		2	R407,408
113-120305-75	METAL OXIDE FILM RESISTOR 12 OHM 1W +-5%		1	R909
113-120405-75	METAL OXIDE FILM RESISTOR 12 OHM 2W +-5%		1	R917

PART NO	DESCRIPTION	-----	QTY	LOCATION-----CTM6854S
113-120505-75	METAL OXIDE FILM RESISTOR 12	OHM 3W +-5%	1	R423
113-121005-17	CARBON FILM RESISTOR 120 OHM	1/16W +-5%	1	R153
113-122005-17	CARBON FILM RESISTOR 1.2K OHM	1/16W +-5%	2	R269,285
113-122105-17	CARBON FILM RESISTOR 1.2K OHM	1/4W +-5%	1	R976
113-123005-17	CARBON FILM RESISTOR 12K OHM	1/16W +-5%	1	R203
113-123105-17	CARBON FILM RESISTOR 12K OHM	1/4W +-5%	1	R974
113-123405-75	METAL OXIDE FILM RESISTOR 12K	OHM 2W +-5%	2	R970,971
113-124005-17	CARBON FILM RESISTOR 120K OHM	1/16W +-5%	1	R413
113-129105-17	CARBON FILM RESISTOR 1.2 OHM	1/4W +-5%	1	R248
113-151005-17	CARBON FILM RESISTOR 150 OHM	1/16W +-5%	1	W223
113-151305-75	METAL OXIDE FILM RESISTOR 150	OHM 1W +-5%	1	R522
113-152005-17	CARBON FILM RESISTOR 1.5K OHM	1/16W +-5%	4	R171,405,42,43
113-152105-17	CARBON FILM RESISTOR 1.5K OHM	1/4W +-5%	2	R516,517
113-152205-12	CARBON FILM RESISTOR 1K5 OHM	1/2W +-5%	2	R508,429
113-153005-17	CARBON FILM RESISTOR 15K OHM	1/16W +-5%	2	R134,401
113-153405-75	METAL OXIDE FILM RESISTOR 15K	OHM 2W +-5%	1	R418
113-154005-17	CARBON FILM RESISTOR 150K OHM	1/16W +-5%	1	R278A
113-158405-75	METAL OXIDE FILM RESISTOR 0.15	OHM 2W +-5%	1	R912
113-159305-49	NON-FLAMMABLE FUSE RESISTOR	1.5 OHM 1W +-5% "KOA"	1	FOR R409A
113-159905-51	WIRE WOUND CEMENT RESISTOR	OHM 10W +-5%	1	R924
113-180505-75	METAL OXIDE FILM RESISTOR 18	OHM 3W +-5%	1	R428
113-181005-17	CARBON FILM RESISTOR 180 OHM	1/16W +-5%	1	R150
113-182105-17	CARBON FILM RESISTOR 1.8K OHM	1/4W +-5%	1	R904
113-182105-17	CARBON FILM RESISTOR 1.8K OHM	1/4W +-5%	1	W287
113-220205-12	CARBON FILM RESISTOR 22 OHM	1/2W +-5%	1	R417
113-221005-17	CARBON FILM RESISTOR 220 OHM	1/16W +-5%	2	R179,129
113-222005-17	CARBON FILM RESISTOR 2.2K OHM	1/16W +-5%	3	R186,419,206
113-222105-17	CARBON FILM RESISTOR 2.2K OHM	1/4W +-5%	1	R518
113-222205-12	CARBON FILM RESISTOR 2.2K OHM	1/2W +-5%	1	R523
113-223005-17	CARBON FILM RESISTOR 22K OHM	1/16W +-5% 18-CB0223-JNX	7	R107-112,420
113-223101-67	METAL FILM RESISTOR 22K OHM	1/4W +-1%	1	R105
113-223105-17	CARBON FILM RESISTOR 22K OHM	1/4W +-5%	3	R972,103,104
113-224005-17	CARBON FILM RESISTOR 220K OHM	1/16W +-5%	1	R127
113-224105-17	CARBON FILM RESISTOR 220K OHM	1/4W +-5%	1	R102
113-229605-51	WIRE WOUND CEMENT RESISTOR	2.2 OHM 5W +-5% * NOT USE *	1	R944
113-243105-17	CARBON FILM RESISTOR 24K OHM	1/4W +-5%	1	R979
113-270405-75	METAL OXIDE FILM RESISTOR 27	OHM 2W +-5%	1	R910
113-270605-75	METAL OXIDE FILM RESISTOR	27 OHM 5W	1	R980
113-271005-17	CARBON FILM RESISTOR 270 OHM	1/16 W +-5%	2	R241,414

PART NO	DESCRIPTION	-----	QTY	LOCATION-----CTM6854S
113-272205-12	CARBON FILM RESISTOR 2.7K OHM	1/2W +-5%	1	R415
113-273005-17	CARBON FILM RESISTOR 27K OHM	1/16W +-5%	3	R119,258,135
113-331005-17	CARBON FILM RESISTOR 330 OHM	1/16W +-5%	7	R156,157,271,261-263,155
113-331105-17	CARBON FILM RESISTOR 330 OHM	1/4W +-5%	1	R901
113-332005-17	CARBON FILM RESISTOR 3.3K OHM	1/16W +-5%	7	R130-131,136,139,204,205,403
113-332102-17	CARBON FILM RESISTOR 3.3K OHM	1/4W +-2%	1	R907
113-332905-58	WIRE WOUND CEMENT RESISTOR	OHM 10W +-5% H=39MM TAIWAN C	1	R416
113-333005-17	CARBON FILM RESISTOR 33K OHM	1/16W +-5%	2	R183,184
113-334105-17	CARBON FILM RESISTOR 330K OHM	1/4W +-5%	1	R981
113-334305-75	METAL OXIDE FILM RESISTOR 330K	OHM 1W +-5%	1	R911
113-335105-17	CARBON FILM RESISTOR 3.3M OHM	1/4W +-5%	1	R977
113-339105-17	CARBON FILM RESISTOR 3.3 OHM	1/4W +- 5%	1	R978
113-390405-75	METAL OXIDE FILM RESISTOR 39	OHM 2W +-5%	1	R01
113-3906W5-7A	METLA OXIDE FILM RES. 39 OHM	5W +-5% I7X23MM QINGYUEN DAW	1	R913
113-391005-17	CARBON FILM RESISTOR 390 OHM	1/16W +-5%	1	R147
113-392005-17	CARBON FILM RESISTOR 3.9K OHM	1/16W +-5%	2	R115,128
113-393005-17	CARBON FILM RESISTOR 39K OHM	1/16W +-5%	1	R190
113-3938J1-67	METAL FILM RESISTOSR 39K OHM	1/8W +-1% "DONGGUAN CHANGAN	1	R143
113-399405-75	METAL OXIDE FILM RESISTOR 3.9	OHM 2W +-5%	1	R432
113-470005-17	CARBON FILM RESISTOR 47 OHM	1/16W +-5%	2	R149,W128
113-470205-75	METAL OXIDE FILM RESISTOR	47 OHM 1/2W +-5%	1	R504
113-471005-17	CARBON FILM RESISTOR 470 OHM	1/16W +-5%	4	R412,163,164,165
113-471105-17	CARBON FILM RESISTOR 470 OHM	1/4W +-5%	2	R519,520
113-471305-75	METAL OXIDE FILM RESISTOR 470	OHM 1W +-5%	1	R404
113-472005-17	CARBON FILM RESISTOR 4.7K OHM	1/16W +-5% 18-CB0472-JNX	9	R132,133,176,177,178,192,193,199,200
113-472005-17	CARBON FILM RESISTOR 4.7K OHM	1/16W +-5% 18-CB0472-JNX	4	R226,228,256,257
113-472005-17	CARBON FILM RESISTOR 4.7K OHM	1/16W +-5% 18-CB0472-JNX	6	R265,266,02,03,254,255
113-472105-17	CARBON FILM RESISTOR 4.7K OHM	1/4W +-5%	1	R908
113-473005-17	CARBON FILM RESISTOR 47K OHM	1/16W +-5%	9	R270,25,26,28,29,31,32,34,35
113-479105-17	CARBON FILM RESISTOR 4.7 OHM	1/4W +-5%	1	R406
113-479605-75	METAL OXIDE FILM RESISTOR 4.7	OHM 5W +-5%	1	R427
113-560005-17	CARBON FILM RESISTOR 56 OHM	1/16W +-5%	1	R151
113-562005-17	CARBON FILM RESISTOR 5.6K OHM	1/16W +-5%	2	R146,434
113-680405-75	METAL OXIDE RESISTOR 68 OHM	2W +-5%	1	R122
113-681005-17	CARBON FILM RESISTOR 680 OHM	1/16W +-5%	1	R116
113-682005-17	CARBON FILM RESISTOR 6.8K OHM	1/16W +-5%	1	R124
113-682102-17	CARBON FILM RESISTOR 6.8K OHM	1/4W +-2%	1	R902
113-682105-17	CARBON FILM RESISTOR 6.8K OHM	1/4W +-5%	1	R906
113-683005-17	CARBON FILM RESISTOR 68K OHM	1/16W +-5%	1	R117

PART NO	DESCRIPTION	-----	QTY	LOCATION-----CTM6854S
113-684005-17	CARBON FILM RESISTOR 680K OHM	1/16W +-5%	1	R409
113-688405-42	FUSEBLE RESISTOR 0.68 2W +-5%		2	R914,937
113-750005-17	CARBON FILM RESISTOR 75 OHM	1/16W +-5%	9	R167-169,24,27,30,36,37,172
113-752005-17	CARBON FILM RESISTOR 7.5K OHM	1/16W +-5%	1	R182
113-821005-17	CARBON FILM RESISTOR 820 OHM	1/16W +-5%	1	R195
113-822005-17	CARBON FILM RESISTOR 8.2K OHM	1/16W +-5%	2	R125,126
113-822105-17	CARBON FILM RESISTOR 8.2K OHM	1/4W +-5%	1	R903
113-823005-17	CARBON FILM RESISTOR 82K OHM	1/16W +-5%	1	R120
113-824005-17	CARBON FILM RESISTOR 820K OHM	1/16W +-5%	1	R118
113-829105-17	CARBON FILM RESISTOR 8.2 OHM	1/4W +-5%	2	R259,260
123-10135E-61	CERAMIC CAP. 100PF 50V +-10%	{TAPING} "SHENZHEN HUAQIN"	4	C102,196-198
123-10235E-90	CERAMIC CAP. 0.001 MFD 50V	+10% "SHENZHEN HUATAI"	2	C149,242
123-10235E-92	CERAMIC CAP. 0.001 MFD 50V	+10% {TAPING} SHENZHEN HUAQI	5	c101,117,120,125,417
123-102850-55	CERAMIC CAP.0.001 MFD 2KV +-10%	"CHENGDU WANG MING" *NOT USE	1	C504
123-103374-90	CERAMIC CAP. 0.01 MFD 50V +80	-20% "DONGGUAN26-EBP103-ZFX	8	C189,06,18,19,27,28,29,30
123-103374-92	CERAMIC CAP. 0.01 MFD 50V +80%	-20% TAPING DONGGUAN WANG M	3	c126,188,405
123-10427E-92	CERAMIC CAP. 0.1 MFD 25V +80-	20% {TAPING} "SHENZHEN HUAQIN	8	C139,141,151-153,202,205,225
123-10427E-92	CERAMIC CAP. 0.1 MFD 25V +80-	20% {TAPING} "SHENZHEN HUAQIN	5	C232,432,145,236,146
123-150340-94	CERAMIC CAP. 15PF 50V +-5%	(NPO) {TAPING TYPE}	3	C160,161,138
123-15135E-61	CERAMIC CAP. 150PF 50V +-10%	{TAPING} "SHENZHEN HUAQIN"	1	C204
123-18034E-94	CERAMIC CAP. 18PF 50V +-5%	NPO {TAPING} "SHENZHEN HUAQIN	1	C137
123-220344-94	CERAMIC CAP. 22PF 50V +-5%	{TAPING} "DONGGUAN WANG MING	2	C203,206
123-22235E-90	CERAMIC CAP. 0.0022 MFD 50V	+10% "SHENZHEN HUATAI"	5	C119,124,133,144,168
123-222850-55	CERAMIC CAP.0.0022 MFD 2KV +-10	% "CHENGDU WANG MING" *NOT U	1	C912
123-223374-90	CERAMIC CAP. 0.022 MFD 50V +80	-20% "DONGGUAN WANG MING"	4	C163,221,02,974
123-223374-92	CERAMIC CAP. 0.022 MFD 50V +80	-20% TAPING DONGGUAN WANG M	4	C121,147,159,229
123-270345-61	CERAMIC CAP. 27PF 50V +-5%	{TAPING} "CHENGDU WANG MING"	4	C171-173,226
123-271354-60	CERAMIC CAP. 270PF 50V +-5%	(SL TYPE) "GONGGUAN WANG MIN	1	C123
123-36034E-94	CERAMIC CAP. 36PF 50V +-5%	NPO {TAPING} "SHENZHEN HUAQIN	2	C406,407
123-47034E-94	CERAMIC CAP. 47PF 50V +-5%	NPO {TAPING} "SHENZHEN HUAQIN	1	C170
123-47135E-60	CERAMIC CAP. 470PF 50V +-10%	"SHENZHEN HUATAI"	2	C901,902 ON 21 PIN PCB
123-47135E-61	CERAMIC CAP. 470PF 50V +-10%	{TAPING} "SHENZHEN HUAQIN"	4	C185,186,191,192
123-820340-94	CERAMIC CAP. 82PF 50V +-5%	(NPO) {TAPING}	2	C164,165
126-103071-07	MYLAR CAP. 0.01 MFD 50V +-10%	{TAPING TYPE}	3	C210,211,412
126-104060-2A	METALIZED POLYESTER FILM CAP.	0.1 MFD 63V +-5% "FUXIN"	7	C135,429,911,208,209,201,451
126-104060-2A	METALIZED POLYESTER FILM CAP.	0.1 MFD 63V +-5% "FUXIN"	1	FOR C405A
126-104060-2I	METALIZED POLYESTER FILM CAP.	0.1 MFD 63V +-5% {TAP.}"FUXIN"	4	C217,402,411,112
126-104101-3A	POLYPROPYLENE CAP. 0.1 MFD	+10% "FUXIN"	1	C122
126-153071-01	MYLAR CAP. 0.015 MFD 50V +-10%	*NOT USE* 2002-12-28	1	C973

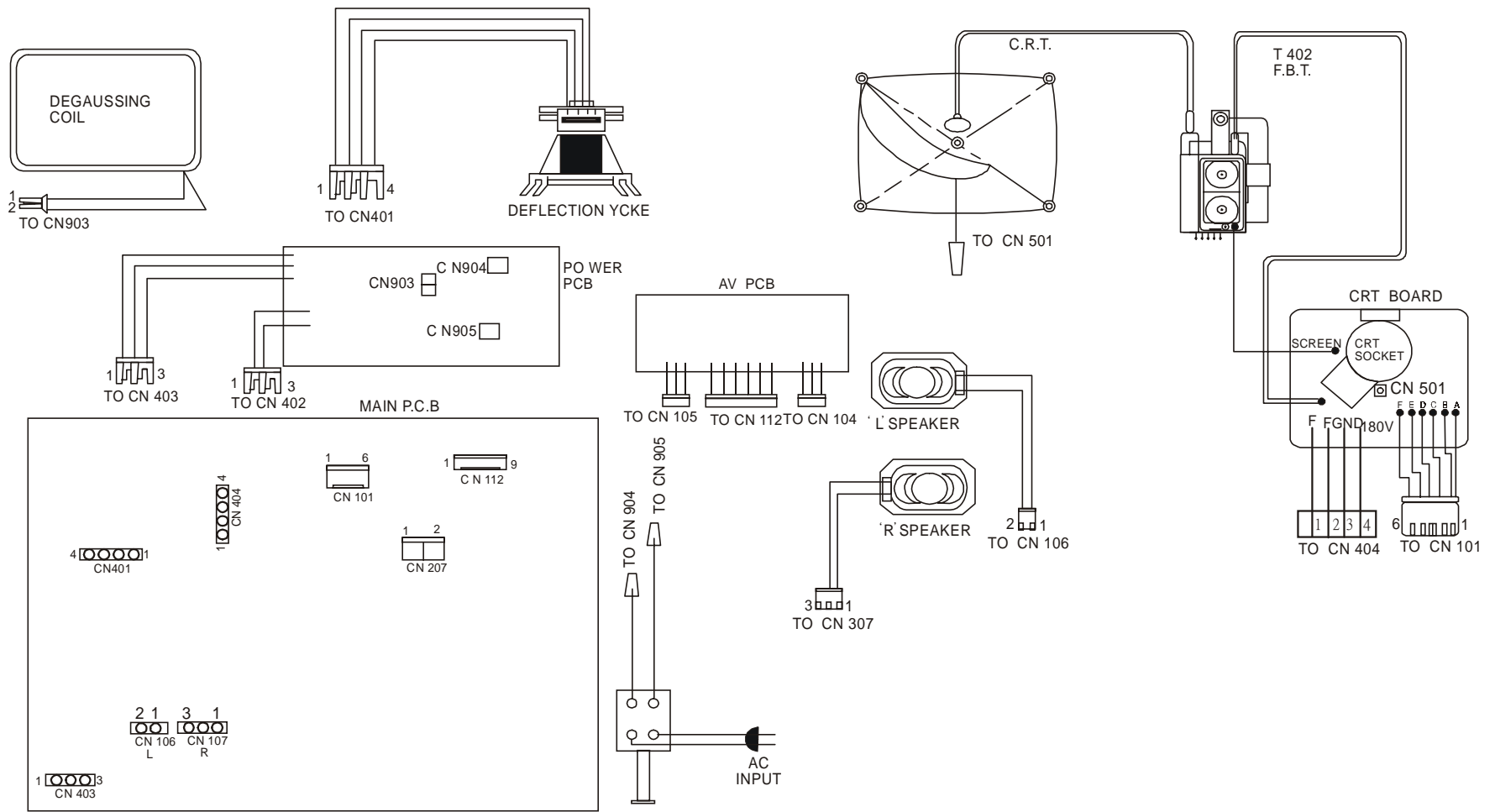
PART NO	DESCRIPTION	-----	QTY	LOCATION-----CTM6854S
126-153630-32	POLYPROPYLENE CAP. 0.015 MFD	630V +-5% "TAIWAN TAIYANG"	1	C409
126-154071-01	MYLAR CAP. 0.15 MFD 50V +-10%		1	C131
126-223071-07	MYLAR CAP. 0.022 MFD 50V +-10%	{TAPING TYPE}	3	C214,215,413
126-223401-3A	POLYPROPYLENE CAP. 0.022 MFD	400V +-10% "FUXIN"	1	C416
126-332071-01	MYLAR CAP. 0.0033 MFD 50V +-10	% *NOT USE* 2002-12-28	1	C115
126-333071-01	MYLAR CAP. 0.033 MFD 50V +-10%	*NOT USE* 2002-12-28	1	C907
126-333071-07	MYLAR CAP. 0.033 MFD 50V +-10%	{TAPING TYPE}	1	C155
126-334071-01	MYLAR CAP. 0.33 MFD 50V +-10%	*NOT USE* 2002-12-28	2	W130,131
126-472071-07	MYLAR CAP. 0.0047 MFD 50V	+-10% {TAPING TYPE}	2	C128,130
126-473071-07	MYLAR CAP. 0.047 MFD 50V +-10%	{TAPING TYPE}	1	C148
126-473211-31	POLYPROPYLENE CAP. 0.047 MFD	250V +-10%	1	C419
126-474060-21	METALIZED POLYESTER FILM CAP	0.47 MFD 63V +-5%	9	C07,08,09,10,11,12,13,14,15
126-474060-2A	METALIZED POLYESTER FILM CAP	0.47 MFD 63V +-5% "FUXIN"	9	C104-106,182,16-17,20,23,21
126-474060-2I	METAL.POLYESTER FILM CAP. 0.47	MFD 63V +-5% {TAPING} "FUXIN"	3	C195,207,187
127-105072-0Y	ELECT CAP. 1 MFD 50V +-20%	{TAPING} "HUNAN YICK YANG"	11	C107-109,129,157,200,166,227,421,506,234
127-105132-0H	ELECT CAP. 1 MFD 160V +-20%	5X11MM "SHENZHEN JIGUANG"	1	C976
127-106042-0I	ELECT CAP. 10 MFD 16V +-20%	"HUNAN YIYANG"	2	C140,233
127-106042-0Y	ELECT CAP. 10 MFD 16V +-20%	{TAPING} "HUNAN YICK YANG"	5	C142,156,158,162,169
127-106072-0D	ELECT CAP. 10 MFD 50V +-20%	"NAM TUNG"	1	C509
127-106072-0T	ELECT CAP. 10 MFD 50V +-20%	{TAPING} 15X11MM "NANTONG"	1	C116
127-106402-0H	ELECT CAP. 10 MFD 400V +-20%	13X20MM "SHENZHEN JINGUANG"	1	C971
127-107042-0Y	ELECT CAP. 100 MFD 16V +-20%	{TAPING} "HUNAN YICK YANG"	8	C111,118,132,134,190,193,194,431
127-107062-0Y	ELECT CAP. 100 MFD 35V +-20%	{TAPING} "HUNAN YICK YANG"	1	C213
127-108052-0A	ELECT CAP. 1000 MFD 25V +-20%	"RUBYCON"	2	C430,927
127-225072-0I	ELECT CAP. 2.2 MFD 50V +-20%	"HUNAN YIYANG"	2	C249,250
127-225072-0Y	ELECT CAP. 2.2 MFD 50V +-20%	{TAPING} "HUNAN YICK YANG"	5	C114,143,212,223,224
127-226042-0Y	ELECT CAP. 22 MFD 16V +-20%	{TAPING} "HUNAN YICK YANG"	1	C127
127-226252-0H	ELECT CAP. 22 MFD 250V +-20%	"SHENZHEN JIGUANG"	1	C433
127-227042-0I	ELECT CAP. 220 MFD 16V +-20%	"HUNAN YIYANG"	1	C01
127-227042-0Y	ELECT CAP. 220 MFD 16V +-20%	{TAPING} "HUNAN YICK YANG"	5	C222,231,422,423,435
127-227052-0Y	ELECT CAP. 220 MFD 25V +-20%	{TAPING} "HUNAN YICK YANG"	1	C975
127-227062-0I	ELECT CAP. 220 MFD 35V +-20%	"HUNAN YIYANG"	1	C507
127-227422-1H	ELECT CAP. 220 MFD 420V +-20%	125 X 45MM "SHENZHEN JICON"	1	C905
127-228052-0I	ELECT CAP. 2200 MFD 25V +-20%	12.5 X 25MM "HUNAN YIYANG"	1	C216
127-228052-0I	ELECT CAP. 2200 MFD 25V +-20%	12.5 X 25MM "HUNAN YIYANG"	1	C930
127-336042-0D	ELECT CAP. 33 MFD 16V +-20%	"NANTONG"	1	C127A
127-337072-0D	ELECT CAP. 330 MFD 50V +-20%	"NANTONG"	1	C508
127-475072-0Y	ELECT CAP. 4.7 MFD 50V +-20%	{TAPING} "HUNAN YICK YANG"	2	C404,428
127-475102-H2	ELECT CAP. 4.7 MFD 100V +-20%	BIPOLAR 12X20MM "YICKYANG"	1	C410

PART NO	DESCRIPTION	-----	QTY	LOCATION-----CTM6854S
127-475132-0H	ELECT CAP. 4.7 MFD 160V +-20%	"SHENZHEN JIGUANG"	1	C972
127-476042-0Y	ELECT CAP. 47 MFD 16V +-20%	{TAPING} "HUNAN YICK YANG"	3	C110,220,228
127-476094-0A	ELECT CAP. 47 MFD 63V +-20%	105øC í6.3X11MM "RUBYCON"	1	C910
127-477052-0I	ELECT CAP. 470 MFD 25V +-20%	"HUNAN YICK YANG"	2	C218,219
130-134148-01	SILICON DIODE IN4148	"AUTO INSERTIO10-1N4148-ABX	19	D101-104,106-111,114-117,195,507-510
130-240809-X1	VARIBLE CAPACITANCE DIODE	BB809 (YELLOW) "TIAN SI HUAN"	2	D112-113
130-310021-00	RECTIFIER DIODE EGIZ SANKEN		3	D970,975,976
130-310021-50	RECTIFIER DIODE BAV21 PHILIPS	{TAPING}	4	D501,502,503,414
130-310228-50	DAMPER DIODE BY228 "PHILIPS"	{TAPING}	1	D402
130-310345-00	RECTIFIER DIODE 3JH45 TOSHIBA	3.0A 600V	2	D401,906
130-310406-00	BRIDGE RECTIFIER RBV-406	SANKEN	1	BR901
130-314004-U0	RECTIFIER DIODE IN4004	"RUGAO DACHANG"	4	D971,972,973,974
130-314004-U0	RECTIFIER DIODE IN4004	"RUGAO DACHANG"	1	D512
130-315295-U0	RECTIFIER DIODE S5295G	"RUGAO DACHANG"	5	D901,902,905,909,910
130-315295-U1	RECTIFIER DIODE S5295G	{TAPING} "RUGAO DACHANG"	5	D403,D404,D405,D406,D407
130-410036-U1	ZENER DIODE 3.6V 1/2W +-5%	{TAPING} "RUGAO DACHANG"	1	ZD103
130-410039-U1	ZENER DIODE 3.9V 1/2W +-5%	{TAPING} "RUGAO DACHANG"	3	ZD901,02,03
130-410056-U1	ZENER DIODE 5.6V 1/2W	{TAPING} "RUGAO DACHANG"	1	ZD902
130-410068-U1	ZENER DIODE 6.8V 1/2W {TAPING}	"RUGAO DACHANG"	1	ZD503
130-410082-U1	ZENER DIODE 8.2V 1/2W	{TAPING} "RUGAO DACHANG"	2	ZD102,903
130-410120-U1	ZENER DIODE 12V 1/2W +-5%	{TAPING} "RUGAO DACHANG"	1	ZD504
130-410351-50	ZENER DIODE 51V BZT03-C51	"PHILIPS"	1	FOR ZD405
130-410574-00	ZENER DIODE UPC 574J NEC		1	ZD401
130-420091-U0	ZENER DIODE 9.1V 1W +-5%	"RUGAO DACHANG"	3	ZD403,904,01
130-610605-00	LED 5MM ROUND (RED/GREEN)	BT605 "FOSHAN"	1	LED601 (ON SENSOR PCB)
131-210719-29	TRANSISTOR 2SA719R/S	MATSUSHITA	1	Q971
131-211015-00	TRANSISTOR 2SA1015 TOSHIBA		2	Q502,504
131-211015-0A	TRANSISTOR 2SA1015 TOSHIBA	{TAPING}	7	Q102-105,110,111,113
131-220774-20	TRANSISTOR 2SB774/Q/R/S	{TAPING} MATSUSHITA	1	Q911
131-220940-16	TRANSISTOR 2SB940P		1	Q401
131-231815-0A	TRANSISTOR 2SC1815 TOSHIBA	{TAPING} 11-SC1815-YBX	11	Q106,108,109,910,912,117,119,402,503,01,02
131-233619-00	TRANSISTOR 2SC3619	* QUALITY PROBEM * <BZ01-058>	1	Q404
131-234706-00	TRANSISTOR 2SC4706 SHIN HO		1	Q909
131-241761-00	TRANSISTOR 2SD1761(E) ROHM		2	Q913,405
131-242500-00	TRANSISTOR 2SD2500 TOSHIBA		1	Q403
131-462369-0A	TRANSISTOR PH2369 PHILIPS	{TAPING}	1	Q101
131-480011-01	TRANSISTOR BUT11A PHILIPS		1	Q970
133-101219-14	I.C. TA1219AN I2C AV SELECTOR	"TOSHIBA"	1	IC01
133-101501-33	I.C. TEA1501 PHILIPS		1	IC970

PART NO	DESCRIPTION	-----	QTY	LOCATION-----CTM6854S
133-103857-33	IC TDA3857 PHILIPS		1	IC109
133-108354-33	I.C. TDA8354Q/N1 PHILIPS		1	IC401
133-108598-33	I.C. PCF8598C-2 PHILIPS		1	IC103
133-109870-33	I.C. TDA9870A DIGITAL TV SOUND	PROCESSOR (DTVSP) W/O NICAM	1	IC107
133-116107-33	I.C. TDA6107Q/N2 (IMPROVEMENT)	PHILIPS	1	IC501
133-153722-12	I.C. M37221MA-218SP (MASKED)	mitsubishi(ENG,RUSSIAN,ITALIAN)	1	IC102
133-202615-33	IC TDA2615 (PHILIPS)		1	IC108
133-304241-31	I.C. M74HCT241B1 SGS		1	IC104
133-507808-61	I.C. KA7808 SAMSUNG		1	IC402
133-517805-61	I.C. KA7805 SAMSUNG		2	IC403,404
136-500038-00	REMOTE CONTROL RECEIVER	HS0038A2 "TEMIC"	1	OPT602 (ON SENSOR PCB)
137-357954-20	CRYSTAL 3.579545 MHz "KOWHA"		1	X102
137-800000-20	CRYSTAL 8.0 MHZ KITRONICS		1	X103
146-104002-00	TACT SWITCH 4 PINS L=11 MM	KFC-A06-L11 "SHENZHEN CONIC"	7	S608-610,104-107 (ON CHANNEL PCB)
160-102254-27	WAFER 2 PINS S11-2W-R	(ANGLE TYPE) S.H.S	1	CN02
160-102255-27	PIN CONNECTOR 2 PINS PLUG	STRAIGHT (UL) (S.H.S)	3	CN107,108,111
160-103255-27	PIN CONNECTOR 3 PINS PLUG		4	CN103,105,106,110
160-104254-27	PIN CONNECTOR 4 PINS PLUG	(ANGLE TYPE)	1	J903
160-104255-27	PIN CONNECTOR 4 PINS PLUG	(SHS)	3	CN113,115,404
160-105255-27	PIN CONNECTOR 5 PINS WAFER	2.5 PITCH	2	CN104,114
160-106255-27	PIN CONNECTOR 6 PINS WAFER	(SHS) S11-W 46-30790H-06X	1	CN101
160-108255-27	PIN CONNECTOR 8 PINS PLUG		2	J904,CN109
160-109254-27	PIN CONNECTOR 9 PINS PLUG	(ANGLE TYPE)	1	CN01
160-109255-27	PIN CONNECTOR 9 PINS PLUG		1	CN112
161-301302-21	DIN SOCKET "CONIC"		1	J13
161-470015-14	RCA JACK 2 PIN (WHITE)	"CONIC"	2	J08,11
161-470015-15	RCA JACK 2 PIN (WHITE) ANGLE	"CONIC"	1	J16 (FOR SIDE AV JACK BOARD)
161-472003-04	RCA JACK 2 PIN YELLOW AV-8.4-2	"SHENZHEN LUNGGUANG"	2	J10,07
161-473204-18	RCA JACK 3 PIN (RED) ANGLE	"CONIC"	1	J15 (FOR SIDE AV JACK BAORD)
161-473204-19	RCA JACK 3 PIN (RED)	"CONIC"	2	J09,J12
161-481105-33	RF CONNECTOR "LOQING CONIC"		1	FOR ANT INPUT
172-620005-40	UL 1007 TOP COAT WIRE AWG 20	50MM BLACK 5 X 5MM	1	FOR SHIELD CAN TO TUNER
172-620010-40	UL 1007 TOP COAT WIRE AWG 20	100MM BLACK 10 X 10 MM	1	FOR CN02 PIN `2' TO ANT INPUT GND
172-620020-40	UL 1007 TOP COAT WIRE AWG 20	200MM BLACK 10 X 10 MM	1	FOR TUNER TO ANT INPUT GND
172-626008-40	UL 1007 TOP COAT WIRE AWG26	80MM BLACK 10 X 10 MM	2	Q909 LUG POW PCB `Z',Q403 LUG MAIN PCB `K'
172-626008-40	UL 1007 TOP COAT WIRE AWG26	80MM BLACK 10 X 10 MM	1	FOR MAIN PCB `B' TO `B'
172-626016-40	UL 1007 TOP COAT WIRE AWG 26	160MM BLACK 10 X 10 MM	1	FOR MAIN PCB `C' TO `C'
172-626020-40	UL 1007 TOP COAT WIRE AWG 26	200MM	1	FOR MAIN PCB `A' TO `A'
172-830120-99	FLAT BRIDED WIRE		2.7	CRT GROUND

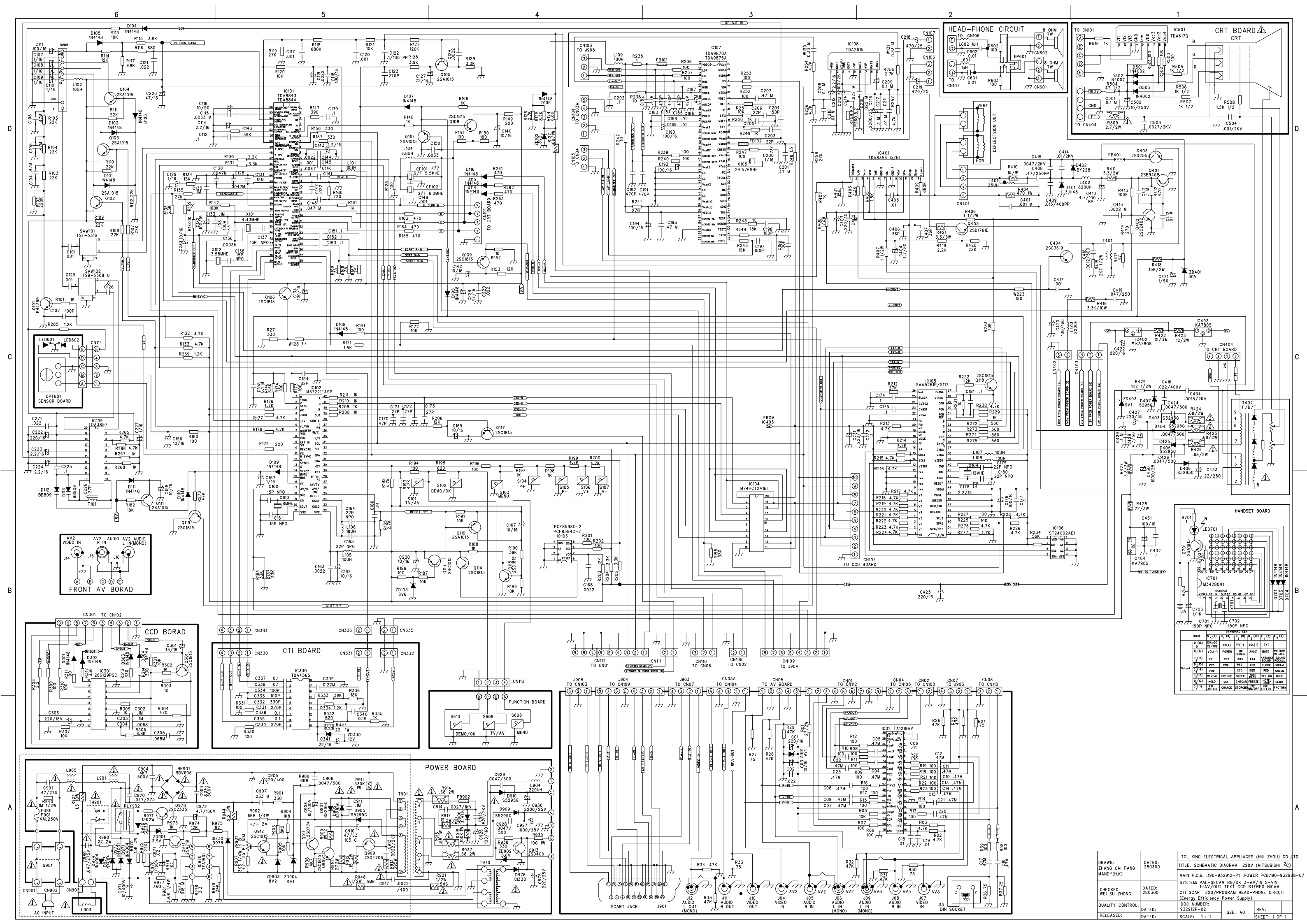
PART NO	DESCRIPTION	-----	QTY	LOCATION-----CTM6854S
179-001010-00	OIL SLEEVING 1 mm DIA.		0.1	20MM-D906, 10MM-C907, 40MM-R970,R971,
179-105000-00	UL PVC TUBE 5mm DIA		0.2	FOR CN901,902
179-105000-00	UL PVC TUBE 5mm DIA		1.2	500MM FOR LEFT SPK.,700MM FOR RIGHT SPK.
179-107300-00	UL PVC TUBE 7.3MM DIA.		0.2	220MM FOR DOUBLE INSULATION WIRE
179-110500-00	UL PVC TUBE 11MM DIA.		0.5	50MM FOR AC LINE CORD,400MM FOR CN403 E
179-403030-00	3MM DIA. SHRINKABLE TUBE		0.1	70MM FOR AC LINE CORD
179-403030-00	3MM DIA. SHRINKABLE TUBE		0.1	80MM FOR SPEAKER TO SPEAKER GRILLE
184-350805-08	AXIAL LEAD BEAD INDUCTORS	"COILS"	5	FB101,102,401,402,901
190-202901-P6	CHANNEL PCB (1111200)		1	
190-282900-P7	SENSOR P.C.B (120799)REV1		1	
190-382504-P8	SIDE JACK BOARD (07032002)		1	
190-382904-P0	CRT PCB (20052002)		1	
190-729A03-P8	AV P.C.B (15062001)	MTISUBISHI CPU+PHILIPHS IYC	1	
190-829B03-08	21 PIN SOCKET P.C.B.(15112001)		1	
190-88200A-XE	POWER SWITCH P.C.B. (270300)		1	
190-932908-07	POWER P.C.B. (07032002)		1	
190-932912-P1	MAIN P.C.B. (13112002)		1	
191-101007-10	1 PIN SOCKET ASS'Y L=350MM	(DOUBLE INSULATION) BLACK	1	FOR CN501 TO CRT GND
191-201234-10	2 PIN SOFT WIRE L=350MM(1 SIDE	SOCKET,1 SIDE PLUG) FLAT CABLE	1	CN111 TO POWER BOARD PIN `1' TO `8',`2' TO `7'
191-201240-10	2 PIN L=340MM #26 UL1185	(W/SINGLE SHIELD WIRE)	1	CN108 TO CN02
191-301036-07	3 PIN SOCKET ASS'Y L=480MM		1	CN403 TO POWER BOARD PIN `1' TO `4',`2' TO `5'
191-301036-07	3 PIN SOCKET ASS'Y L=480MM		0	`3' TO `6'
191-301067-10	3 PIN L=350MM #22 UL1672	(2 WIRE) STV8-3H	1	CN402 TO POWER BOARD PIN `2' TO `1',`3' TO `2'
191-301271-10	3 PIN FLAT CABLE L=500MM AWG26	UL2468 (SOFT WIRE 1 SIDE PLUG)	2	CN103 TO J905,CN105 TO CN04
191-301272-10	3 PIN FLAT CABLE L=340MM AWG26	UL2468 (SOFT WIRE 1 SIDE PLUG)	1	CN110 TO CN06
191-401025-10	4 PIN SOCKET ASS'Y L=450MM	(FLAT CABLE) UL2468 #26	1	CN404 TO CRT BOARD PIN `1' TO `FF',`2' TO `GND',
191-401025-10	4 PIN SOCKET ASS'Y L=450MM	(FLAT CABLE) UL2468 #26	0	`3' TO `GND',`4' TO `180V'
191-401041-10	4 PIN FLAT CABLE L=250MM		1	CN113 TO CHANNEL BOARD `1' TO `D',`2' TO `C',
191-401041-10	4 PIN FLAT CABLE L=250MM		0	`3' TO `B',`4' TO `A'
191-401041-10	4 PIN FLAT CABLE L=250MM		1	CN115 TO CNEL BOARD `1'TO`E', `2'TO`F',`3'TO`G'
191-401041-10	4 PIN FLAT CABLE L=250MM		0	`4'TO`H'
191-401232-10	4 PIN L=220MM AWG26 UL1185 W/	TRIPLE SHIELD WIRE,1 SIDE PLUG	1	CN07 TO J903
191-501026-10	5 PIN SOCKET ASS'Y L=480MM	(FLAT CABLE)	1	FOR CN104 TO CN03A
191-501040-10	5 PIN FLAT CABLE L=250MM AWG26	UL2468 (SOFT WIRE)	1	CN114 TO SENSOR BOARD PIN `1' TO `1',`2' TO `2',
191-501040-10	5 PIN FLAT CABLE L=250MM AWG26	UL2468 (SOFT WIRE)	0	`3'TO`3',`4' TO Q605 `C', `5' TO Q606 `C'
191-501229-10	5 P FLAT CABLE #26 UL2468 MALE	400MM,FEMALE 360MM 2 SIDE PLUG	1	CN05 TO SIDE AV BOARD PIN `1' TO `A',`2' TO `B',
191-501229-10	5 P FLAT CABLE #26 UL2468 MALE	400MM,FEMALE 360MM 2 SIDE PLUG	0	`3' TO `C',`4' TO `D',`5' TO `E'
191-601009-10	6 PIN SOCKET ASS'Y L=450MM	(W/FLAT CABLE)	1	CN101 PIN `1'TO`A',`2'TO`H',`3'TO`C',`4'TO`D',
191-601009-10	6 PIN SOCKET ASS'Y L=450MM	(W/FLAT CABLE)	0	`5'TO`E',`6'TO`F'

PART NO	DESCRIPTION	-----	QTY	LOCATION-----CTM6854S
191-801225-10	8 PIN L=400MM #26 UL2468 (P1-4	,6,7 FLAT CABLE,P5,8 S.S.WIRE)	1	CN109 TO J904
191-901214-10	9 PIN 340MM #26 UL2468 P1-3 FL	AT CABLE,P4-5,6-7,8-9 S.S.WIRE	1	CN112 TO CN01
402-522001-11	COAXIAL CABLE W/DIN, RCA 250MM	W/3 SOLDERING POINT "MIKI"	1	FOR TUNER TO RF CONNECTOR
504-305006-10	MACHINE SCREW 3 X 6 B/M	(WHITE)	2	2 FOR POWER SWITCH MTG.
514-400312-10	SELF-TAPPING SCREW 4 X 12 B/A	(HARDEN)	1	FOR HEAT SINK TO FBT.
515-303408-10	SELF-TAPPING SCREW 3 X 8	W/B/T (HARDEN)	9	4-AV IN/OUT PCB,2-IC401,1-IC402,1-IC403,1-Q403
515-303408-10	SELF-TAPPING SCREW 3 X 8	W/B/T (HARDEN)	3	1 FOR Q401, 2 FOR 161-682102-22
515-303410-10	SELF-TAPPING SCREW 3 X 10	W/B/T (HARDEN)	2	FOR 723-932002-01 TO FRONT CAB.
515-303410-10	SELF-TAPPING SCREW 3 X 10	W/B/T (HARDEN)	23	14 FOR MAIN PCB,9 FOR POWER PCB
517-303312-10	SELF-TAPPING SCREW 3 X 12 W/A	W/H=7MM (HARDEN)	2	1 FOR BR901,1 FOR Q909
517-306110-10	SELF TAPPING SCREW 3 X 10 W/T	W/H =10MM	2	FOR SIDE JACK PCB
518-300308-20	SELF - TAPPING SCREW 3X8 B/T	COARSE GROVE & HARDEN (BASS	3	1-IC404, 1-IC501, 1-IC108
540-020030-01	EYELET 2 X 3 MM		15	4-L901,4-L905,2-R416,2-C408,
540-020030-01	EYELET 2 X 3 MM		0	1-Q403 `C',2-L402
540-020030-01	EYELET 2 X 3 MM		5	3 FOR T402,2 FOR L401
580-101004-04	TWIST LOCK SUPPORTS	"KANGLI"	1	FOR CN403
580-101261-01	CABLE TIE L=100MM		3	2-PW.SW.PCB,1-CN403
580-101261-01	CABLE TIE L=100MM		3	
661-932501-01	FUSE LABEL - ATAKI DESIGN	(T4A/250V)	1	
723-932002-01	POWER SWITCH BRACKET (NEW)	FOR POWER	1	
746-063101-01	AC LINE CORD PIN		4	FOR POWER SWITCH PCB
750-063101-00	SOLDERING LUG LEG:8X4MM		2	FOR Q403,Q909
750-063102-01	35MM SOLDERING LUG	OD:7 ID:3.2 LEG:4X35MM	4	FOR AC LINE CORD
766-686801-00	FUSE HOLDER		2	F901
779-882001-01	IRON HEAT SINK (D)		1	FOR IC404
779-882803-02	IRON HEAT SINK		1	IC108
779-882803-03	IRON HEAT SINK {NEW}		1	IC501
781-932803-06	ALUMINIUM HEAT SINK - (MODIFY	BY 781-932803-03)	1	FOR IC401,402,403,Q403,Q401
781-932912-00	POWER PCB HEAT SINK (O)		1	FOR Q909,BR901
783-931304-03	SHIELD CAN		1	
783-931305-07	SHIELD CAN COVER		1	
810-052204-14	POLYBAG 5" X 22" X 0.04MM	W/RE-CYCLING MARK {P/O MAT}	1	FOR AC LINE CORD
839-932A01-00	FUSE INSULATION RUBBER COVER		1	FOR FUSE
889-729A10-U0	AV PCB PVC COVER(UL)		1	FOR AV IN/OUT PCB 190-729A03-P8
896-882101-00	POWER BOARD COVER (UL)		1	
920-282901-U0	P.C.B MTG BRACKET BLACK ABS	UL94V0	1	
929-282903-00	LED BRACKET		1	
929-821C01-00	REMOTE BRACKET		1	
939-921C01-00	POWER KNOB ADAPTER		1	



接線圖

25" 29"
單片機



DRAWN: ZHANG CAI FANG
 CHECKED: WEI SU ZHONG
 QUALITY CONTROL:
 RELEASED:

DATED: 280300
 DATED: 280300
 DATED:

TITLE: SCHEMATIC DIAGRAM 220V (MITSUBISHI 2C)
 MAIN P.C.B.: J90-932912-P1 POWER PCB190-932908-07
 SYSTEM: PAL-SECAM 80/50K 3-AV/IN S-VIN
 CT1 SCART 220/PROGRAM HEAD-STEREO CIRCUIT
 (Energy Efficiency Power Supply)

DDC NUMBER: 832912-02
 SCALE: 1:1
 SIZE: A0
 SHEET: 1 OF 1